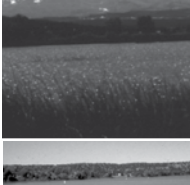




lathrop state park

FY09-10



who we are

Nestled in the shadow of the legendary Spanish Peaks, Lathrop State Park's gentle climate, beautiful campsites, excellent fishing, water-skiing and great views of the nearby mountains lure travelers and visitors to the park. The park features year-round camping, a three-mile paved trail, group picnic shelter, swim beach and the state park system's only golf course. The Lathrop Visitor Center includes murals showcasing the area's history and heritage.

Visitors to Lathrop State Park spend about \$7 million annually at local businesses.

Source: Corona Research, *Colorado State Parks Marketing Assessment*, "Visitor Spending Analysis 2008-2009."

top attractions

- Lathrop features the only golf course in the state park system.
- The paved three-mile Cuerno Verde trail is a closed loop that is ideal for bicycles, skates and scooters as well as walkers.
- Horseshoe Lake, on the west end of the park, features world-class fishing for the elusive tiger muskie, which can reach 60" in length and weigh over 40 pounds.
- New group camping/picnic shelter with shoreline access.
- Newly renovated campground with upgraded electric outlets, new shower facilities and new paving.

our partners

- Walsenburg City Council
- Huerfano County Commissioners
- Walsenburg School District
- LaVeta School District
- Bass Anglers Sportsmen Society (B.A.S.S. Club)
- Muskies Inc.
- Audubon Society
- Ducks Unlimited
- Huerfano County Medical Center
- Colorado State Patrol

challenges we face

- Develop a capital rehabilitation plan and seek capital funding to complete renovation of the Martin Beach area, which is the most popular and intensively used area of the park.
- Natural resources management presents a unique challenge in terms of inspecting and decontaminating for aquatic Eurasian milfoil, controlling IPS beetle infestations and investigating unique ways to control invasive plant species such as tamarisk, Russian olive, thistle, and clover. Colorado State Parks continues to seek creative, unique ways to control invasive species to maintain ecological diversity in this distinct park.
- Seek efficiencies and alternatives that close the gap between revenue generated and operational expenses, so that Lathrop State Park remains available to the public and continues to be an important economic and tourism component in Huerfano County and southeast Colorado.

our enduring vision

Colorado State Parks offer exceptional settings for renewal of the human spirit. Residents and visitors enjoy healthy, fun-filled interaction with the natural world, creating rich traditions with family and friends that promote stewardship of our natural resources. Park employees and their partners work together to provide ongoing and outstanding customer service through recreational programs, amenities and services.

statistics and ratios

Visitation FY 09-10: **138,396**

Estimated expenditures within 50 miles of the park: **\$7,038,359 (2008-2009)**

Full-time staff: **4.5**

Visitor to full-time staff ratio: **30,755:1**

Temporary employees: **13**

Volunteers: **60**

Volunteer hours contributed: **5,737**

County: **Huerfano**

Congressional District: **3**

State Legislative Districts

Senate: **2**

House: **64**

expenses/revenue

Total operating expenses: **\$734,132**

Total construction expenses: **\$ 85,400**

Total revenue generated: **\$296,329**

Self-sufficiency ratio: **40%**
(FY 09-10 revenues/operating expenses)

park inventory

Year became a state park: **1962**
Land acres: **1,132**
Water acres: **412**
Elevation: **6,400'**

Ownership

State parks: **34%**
Other: **66%**

Miles of Roads

Paved: **7.7**
Unpaved: **3.0**

Miles of Trails

Hiking: **5**
Biking: **3**

Boat Ramps: 3

Campsites: 103

Picnic sites: 40

Concessions: 0

Major buildings/structures:

Visitor center
Beach bathhouse
Shower buildings
Park residence

land acquisitions FY 09-10

There were no new acquisitions in FY 09-10.

volunteer activities

- We have successfully recruited a volunteer with advanced auto mechanics skills to serve as a park mechanic.
- Through various senior citizen sources, we recruited four campground hosts for the summer season.
- We were the recipient of a major Youth Corps crew this summer for about 2,000 hours of beneficial project labor.

to contact us:

Lathrop State Park • (719) 738-2376 • Park Manager: John Brandstatter
70 County Road 502 • Walsenburg, CO • 81089 • lathrop.park@state.co.us • www.parks.state.co.us

42 great
state parks!

