



elkhead reservoir

FY09-10



who we are

Elkhead Reservoir is an incredible fishery for warm water fishing, and a great basecamp for seeing “Old West” history in the Steamboat and Northwest Colorado area. The campgrounds at Elkhead are open during hunting season for that reason.

Visitors spend an estimated \$6 million annually at local businesses at Elkhead Reservoir State Park.

Source: *Corona Research, Colorado State Parks Marketing Assessment, “Visitor Spending Analysis 2008-2009.”*

top attractions

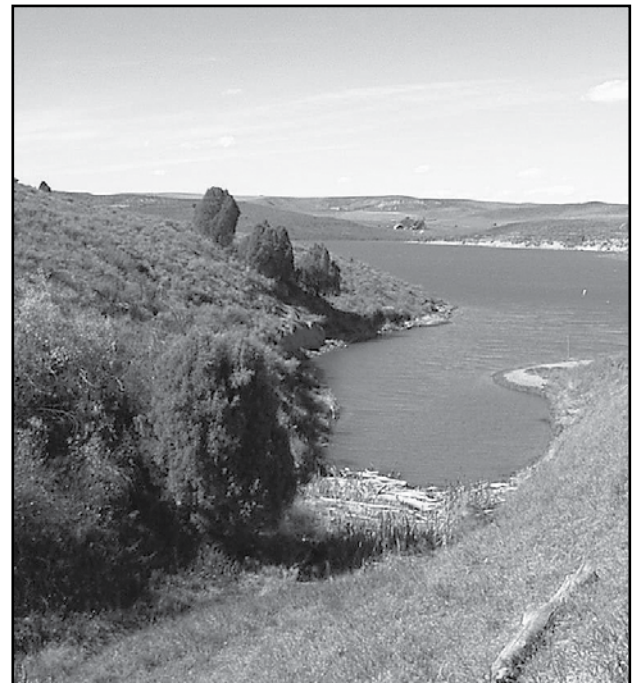
- Incredible warm water fishery.
- 900 acres of reservoir for water skiing, boating, fishing, swimming and camping.
- Located in the “elk capitol” of Colorado.
- Great base for access to Routt National Forest and Bureau of Land Management (BLM) public lands.
- Steamboat and other near-by communities encourage “Old West” tourism. Elkhead Reservoir State Park can provide a convenient base camp for those and other activities.

our partners

- Yampa River Legacy partners: City of Craig, Routt County, Moffat County, town of Hayden, City of Steamboat, Bureau of Land Management, National Park Service, Nature Conservancy, Yampa Valley Land Trust.
- Colorado River Water Conservation District

challenges we face

- We need to work closely with our local communities to plan and develop a trail component that addresses current multiple uses needs, but is sustainable for future trends and demands.
- Addressing the importance of managing non-native species like aquatics and noxious weeds and gain support for those programs regardless of controversy or their financial impacts on other more popular issues.
- Encourage support from local users and officials in regards to fee collection, administration and management of the reservoir programs.



our enduring vision

Colorado State Parks offer exceptional settings for renewal of the human spirit. Residents and visitors enjoy healthy, fun-filled interaction with the natural world, creating rich traditions with family and friends that promote stewardship of our natural resources. Park employees and their partners work together to provide ongoing and outstanding customer service through recreational programs, amenities and services.

statistics and ratios

Visitation FY 09-10: **74,377**

Estimated expenditures within 50 miles of the park: **\$6,345,547 (2008-2009)**

Full-time staff: **1**

Visitor to full-time staff ratio: **74,377:1**

Temporary employees: **10**

County: **Routt and Moffat**

Congressional District: **3**

State Legislative Districts
Senate: **8**
House: **57**

expenses/revenue

Total operating expenses: **\$68,004**

Total construction expenses: **\$0**

Total revenue generated: **\$56,993**

Self-sufficiency ratio: **84%**
(FY 09-10 revenues/operating expenses)

park inventory

Year became a state park: **2007**

Land acres: **1,172**

Water acres: **900**

Elevation: **6,365'**

Ownership

State parks: **0%**

Other: **100%**

Miles of Roads

Paved: **0**

Unpaved: **3.0**

Miles of Trails

Hiking/biking/horse: **8.0**

Boat ramps: 2

Campsites: 16

Picnic sites: 20

Concessions: 1

Major buildings/structures:

No major buildings or structures at this park.

land acquisitions FY 09-10

There were no new acquisitions in FY 09-10.

volunteer activities

- Volunteers worked to establish the Hill Top Trail which gives great views of the new Elkhead dam and recreation facilities.
- Bears Ears trail was also established after reconstruction. This trail gives visitors access from the Bears Ears campground and 1.5 miles to the newly established wet lands viewing area.

to contact us:

Elkhead Reservoir State Park • (970) 276-2061 • Park Manager: Ron DellaCroce
PO Box 759 • Hayden, CO • 81639 • elkheadpark@state.co.us • www.parks.state.co.us

42 great
state parks!



Colorado State Parks