

PASSES AND PERMITS

All visitors entering the park are required to display a current Colorado State Parks Pass, issued by vehicle, on their auto windshield. A **daily pass** is valid from the day purchased until noon the following day. An annual pass is valid at any Colorado State Park. For **annual pass** holders who own more than one car, multiple passes are available for a reduced fee. Daily passes are available at self-service dispensers.



Colorado disabled veterans displaying Colorado Disabled Veteran (DV) license plates are admitted free without a pass.

In addition to a parks pass, campers are required to purchase and display a camping permit at their campsite.

Colorado residents 64 years of age or older qualify for a special **Aspen Leaf** annual pass, or an Aspen Leaf Lifetime card available at a discounted rate. These allow admission to all state parks every day and discounted camping on weekdays. A camping fee is charged on weekends and holidays. Where available, an electrical fee is charged.

REGULATIONS

To help maintain the natural beauty and enjoyment of Golden Gate Canyon State Park, please respect the following:

1. Motorized vehicles must be kept on authorized roads.
2. Parking and camping are allowed only in designated areas.
3. Fires must be contained within the facilities provided and must be completely extinguished when not attended. No fires are allowed in the backcountry.
4. Proper receptacles for trash, waste water and sewage must be used.
5. Pets must be kept under control and on a leash no more than six feet long at all times.
6. Dead and downed trees can be collected for firewood use in campgrounds only.
7. Maximum camping stay in the park is 14 days within any 45-day period.
8. Firearms and other weapons are prohibited in the park except while actively hunting during legal hunting seasons. Contact the Visitors Center for more information.

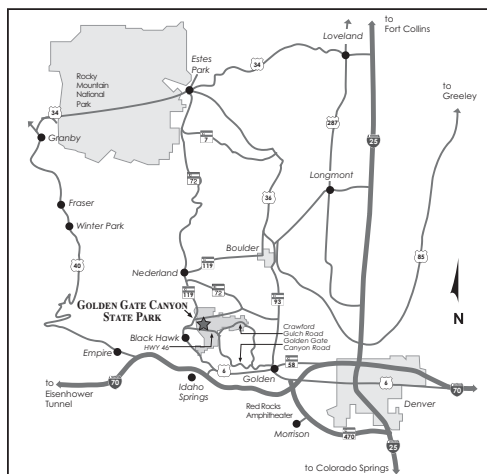


EMERGENCIES/INFORMATION

Park rangers are trained and equipped to give first aid. Assistance may also be obtained at the Visitors Center.

If you have any questions or comments about the park, consult the park staff at Golden Gate Canyon State Park.

LOCATION MAP



To reach Golden Gate Canyon State Park, take Highway 93 north from Golden one and a half miles to Golden Gate Canyon Road. Turn left and continue for 13 miles to the park.

GOLDEN GATE CANYON STATE PARK

COLORADO PARKS & WILDLIFE

92 Crawford Gulch Road • Golden, CO 80403
(303) 582-3707 • E-mail: golden.gate.park@state.co.us

42 Great State Parks!
www.parks.state.co.us



Funded in part by Great Outdoors Colorado through Colorado Lottery proceeds.



Become our friend and follow us.

CPW_HPGG_18.5K_3/12

COLORADO PARKS & WILDLIFE

GOLDEN GATE CANYON STATE PARK



*42 Great State Parks
to Explore & Enjoy!*



Visit all Colorado's State Parks at
www.parks.state.co.us

WELCOME!

Green mountain meadows, lush aspen groves and pine-covered hills greet you at Golden Gate Canyon State Park, 16 miles northwest of Golden.

With more than 12,000 acres of beauty ranging in elevation from 7,600 to 10,400 feet, Golden Gate offers a variety of outdoor recreation opportunities within a one hour drive of the Denver area.

VISITORS CENTER

The Visitors Center, which is open daily, year-round, is located just inside the southeast entrance of the park on Golden Gate Canyon Road. Featured at the Visitors Center is the Wilbur and Nellie Larkin Memorial Nature Trail. This trail was designed to be accessible to the physically challenged and winds around the park's trout show pond. Inside the center are displays and exhibits describing the wildlife and plants of the area; a topographical scale model of the park; and a sales outlet for books, maps, shirts, posters and other interesting items.



ACTIVITIES

PICNICKING

There are more than 125 scenic picnic sites located along Ralston Creek, at Ole' Barn Knoll, Bootleg Bottom, Panorama Point and Kriley and Slough ponds.

EVENT FACILITIES

The Red Barn Group Picnic Area can accommodate up to 150 people. This rustic setting is perfect for large get-togethers with co-workers, neighbors or family and friends. This area is equipped with sheltered picnic tables, large grills, vault toilets, water and electricity. Additional amenities for guests interested in reserving this area include use of hiking trails, fishing ponds, playground, volleyball court and horseshoe pit.

Panorama Point can be scheduled for weddings/ special events for groups of 40 people or less. The scenic overlook includes a large wood deck that offers a breath-taking backdrop of the Continental Divide.

The Columbine Meeting Room is perfect for small group meetings, classes or conferences. Located in a beautiful mountain setting, this meeting room is in the park's Visitors Center and is an easy commute from the Denver metro area.

For event facility scheduling and reservation information call the park office at (303) 582-3707.

FISHING AND HUNTING

Fishing is permitted in any stream or pond in the park except the Visitors Center show pond. All ponds are stocked regularly during the summer. A Colorado fishing license (available at the Visitors Center) is required.

Hunting in the park is controlled and is permitted in the Jefferson County portion of the park only. No hunting is allowed from the Friday prior to Memorial Day until the Tuesday following Labor Day. Limited access permits are available for hunting elk on the Green Ranch portion of the park. Information on seasons, regulations, and Green Ranch permits are available at the park office or on the web site.

HIKING, BIKING, HORSEBACK RIDING

Nearly 35 miles of hiking trails in the park offer opportunities and challenges for everyone. The 12 trails are each named for an animal native to the area and are marked with the animal's footprint. Some trails are for hikers only, while other trails are for multiple use— for hiking, horseback riding and mountain biking. Trailheads with parking areas are easily accessible from the main roads in the park. Refer to the trail map for more information. Please be courteous of all trail users! Mountain bikers yield to hikers and horses, hikers yield to horses.

OVERNIGHT ACCOMMODATIONS

Several overnight options are available to park visitors including developed RV and tent camping, backpack tent camping, group camping, one room cabins and yurts and a guest house. During summer months, campground information can be obtained at 303-642-3856 (call 303-582-3707 other times of the year). For camping, cabin and yurt reservations, except backcountry sites, call 303-470-1144 or 1-800-678-2267. For guest house reservations call 303-582-3707. More information is available at www.parks.state.co.us.

GROUP CAMPING

A group of up to 75 people interested in tent camping can reserve Rifleman Phillips Group Camping Area. Nestled among a stand of lodge pole pines, the amenities provided in this area are water, vault toilets, fire pits, grills, picnic tables and large tent pads.

The Works Ranch is a secluded 6 person cabin and group tent camping area. Up to 30 people can stay at the site; 6 in the cabin and 24 campers. Amenities include bunk beds, electricity, table and chairs, and a fire place in the cabin, picnic tables, grills, vault toilets, water, and

two large tent pads for campers. Two night minimum is required to rent the Works Ranch. For event facility scheduling and reservation information call the park office at (303) 582-3707.

REVEREND'S RIDGE CAMPGROUND

This campground provides both electric and tent campsites each with picnic table and fire grill. Campground facilities include flush toilets, showers and laundry. During the summer, campfire programs are presented in an outdoor amphitheater. There is a holding tank dump station at Reverend's Ridge Campground. Limited sites and facilities are available during winter months. Please contact the park office or visit our web site for up to date conditions and available facilities.

ASPEN MEADOW CAMPGROUND

This campground provides 35 campsites for tents only. Facilities include water pumps, vault toilets and fire rings. Sites 15 and 16 at Rimrock Loop are designed for horseback riders. This campground is closed during winter months.

CABINS AND YURTS

Cabins and Yurts, located at Reverend's Ridge Campground, are available year-round with sleeping for up to six people. There is an outdoor picnic table and grill on-site for cooking. Flush toilets are nearby with showers (open weather permitting). Each unit has heat and electricity. Pets are welcome for an additional fee in yurt 1 and cabins 1, 3, 4 and 5.

HARMSEN RANCH GUEST HOUSE

For groups of 8 or less, consider a stay at this quaint and historic 4 bedroom house set in a mountain meadow. Amenities include private bedrooms including a master suite, 2 bathrooms, full kitchen, large deck with outdoor cooking area, and barn and corral area. For additional fees larger groups could utilize two RV/horse trailer type parking sites with electrical hookups located near the barn. Visitors staying at Harmsen have easy access to multiple use trails and other park amenities.

BACKCOUNTRY CAMPSITES

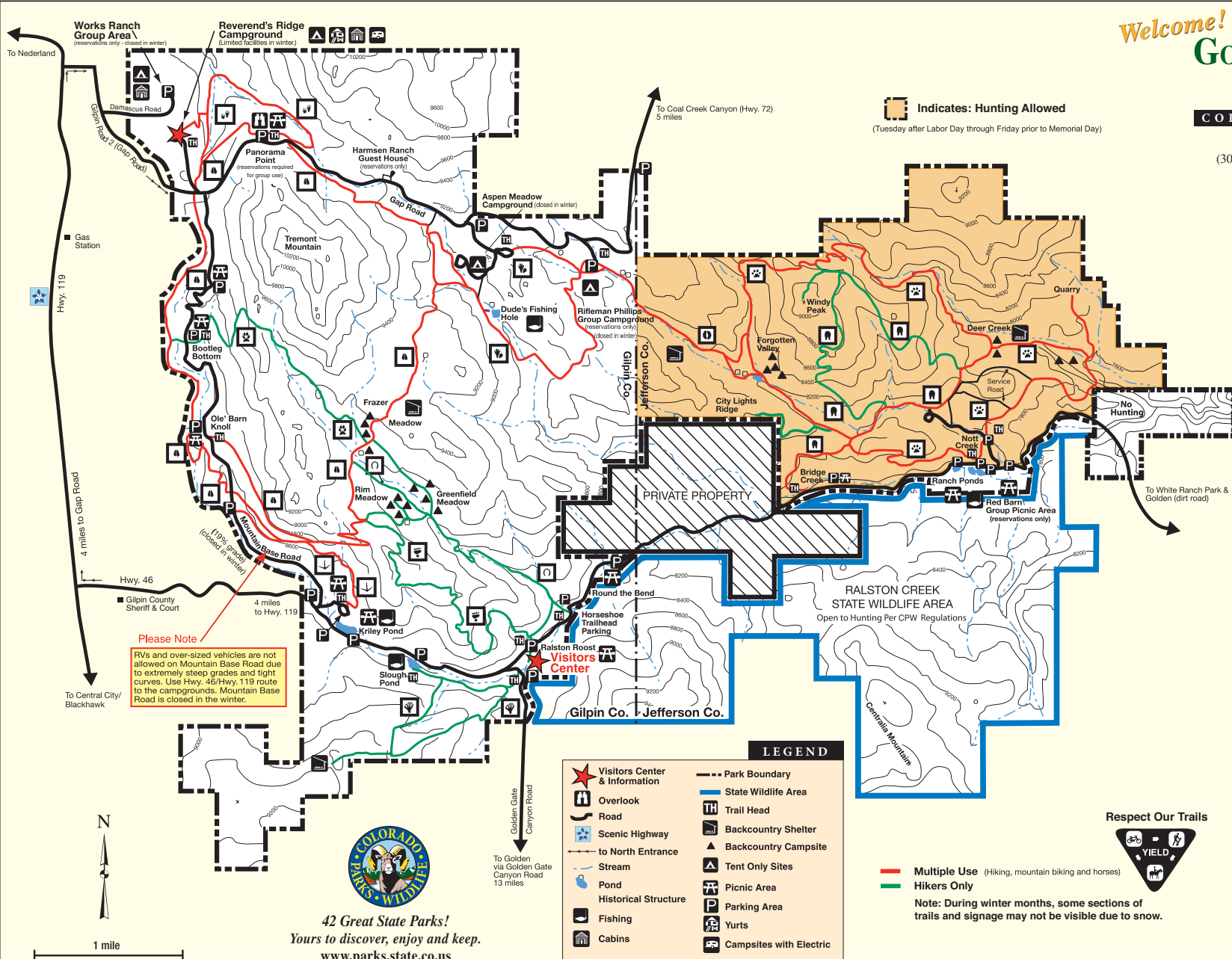
For those who want a more primitive and somewhat unusual camping experience, there are four backcountry shelters available at Golden Gate. These three-sided structures, with a roof and wooden floor, are built in the Appalachian trail-hut tradition and can sleep up to six people with no need for a tent. In addition to the shelters, there are 20 backcountry tent sites. Backcountry camping permits must be obtained at the Visitors Center. No fires are allowed in the backcountry.

Welcome!

GOLDEN GATE CANYON STATE PARK

COLORADO PARKS & WILDLIFE

92 Crawford Gulch Road • Golden, CO 80403
 (303) 582-3707 • E-mail: golden.gate.park@state.co.us



Indicates: Hunting Allowed
 (Tuesday after Labor Day through Friday prior to Memorial Day)

TRAILS

	Beaver - Most Difficult Start: Visitor Center End: Visitor Center	2.5 mi.
	Black Bear - Most Difficult Start: Ralston Roost Trailhead End: Intersection with Mule Deer Trail	2.8 mi.
	Blue Grouse - Moderate Start: Kriley Pond End: Intersection with Mule Deer Trail	0.7 mi.
	Buffalo - Moderate Start: Rifleman Phillips End: Forgotten Valley	1.2 mi.
	Burro - Difficult Start: Bridge Creek End: Bridge Creek	4.5 mi.
	Burro - To City Lights Ridge Start: Bridge Creek End: City Lights Ridge	1.2 mi.
	Coyote - Most Difficult Start: Bootleg Bottom End: Frazer Meadow	2.0 mi.
	Horseshoe - Moderate Start: Horseshoe Trailhead End: Frazer Meadow	1.8 mi.
	Mountain Lion - Difficult Start: Nott Creek End: Nott Creek	6.7 mi.
	Mule Deer - Moderate Start: Ole' Barn Knoll End: Ole' Barn Knoll via Panorama Point	7.4 mi.
	Raccoon - Moderate Start: Reverend's Ridge End: Reverend's Ridge via Panorama Point	2.5 mi.
	Snowshoe Hare - Difficult Start: Aspen Meadow End: Aspen Meadow	3.0 mi.



Multiple Use (Hiking, mountain biking and horses)
 Hikers Only
 Note: During winter months, some sections of trails and signage may not be visible due to snow.

Please Note
 RVs and over-sized vehicles are not allowed on Mountain Base Road due to extremely steep grades and tight curves. Use Hwy. 46/Hwy. 119 route to the campgrounds. Mountain Base Road is closed in the winter.



42 Great State Parks!
 Yours to discover, enjoy and keep.
www.parks.state.co.us

