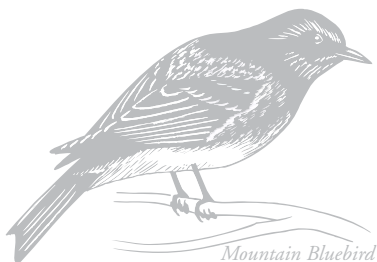


BIRDING SITES IN BENT COUNTY

John Martin Reservoir State Park includes Lake Hasty Campground and much of the northeast portion of John Martin Reservoir. Both sites provide excellent birding opportunities throughout the seasons. John Martin State Wildlife area includes the entirety of the reservoir, and adjacent marshes, riparian forests and upland habitat west nearly to the city of Las Animas.

Additional birding sites in Bent County:

1. **Van's Grove** – Part of the John Martin State Wildlife Area, this birding site is located on County Road JJ 0.8 mile west of Bent County Road 18, and 1.2 miles east of Bent County Road 17. The low elm trees in this abandoned homestead make viewing skulking birds easy, while the isolated nature of the grove make it an oasis for migrant land birds. Most species of eastern warblers recorded in Colorado have been seen in this unlikely migrant trap.
2. **Wood Thrush Grove** – Part of the John Martin State Wildlife Area, this site is a tiny oasis of tall trees with abundant undergrowth on the southeast corner of Bent County Roads 16 and JJ. This site is only 2.2 miles west of Van's Grove. Another of Colorado's premier sites to look for migrant land birds.



3. **Fort Lyon State Wildlife Easement** – only one mile south of Wood Thrush Grove, this may be the largest elm grove in Colorado. The best access is from Road HH, 0.2 miles west of County Road 16. A recent drought has killed many of the elm trees, increasing the population of woodpeckers, and possibly reducing the number of other land birds. This is another of Colorado's premier land bird migration hotspots. Take care not to disturb nesting Great Blue Herons, recent colonists.

4. **Ft. Lyon Marshes** – One excellent marsh is at the right-angle turn where Bent County Road 16 becomes Bent County Road HH. This is currently a good place to listen for rails and bitterns after dark. Marshes in this area have historically hosted rare sparrows (including LeConte's) in the winter, but the invasion of cottonwood and tamarisk trees has greatly compromised this habitat. NOTE: Please follow American Birding Association ethical guidelines and refrain from playing tapes to draw these sensitive species into view. Listen quietly and consider counting marsh birds as "heard only".

5. **Green Heron Slough** – located 0.25 miles south of Bent County Road HH, immediately opposite the Fort Lyon State Wildlife Easement. A perennial stream flows through the dike draining the Ft. Lyon Hospital/Prison, and provides habitat for water-loving migrants and resident birds. The huge cattail marsh east of the slough hosts almost every marsh bird species, including rails, bitterns, sparrows and wrens.

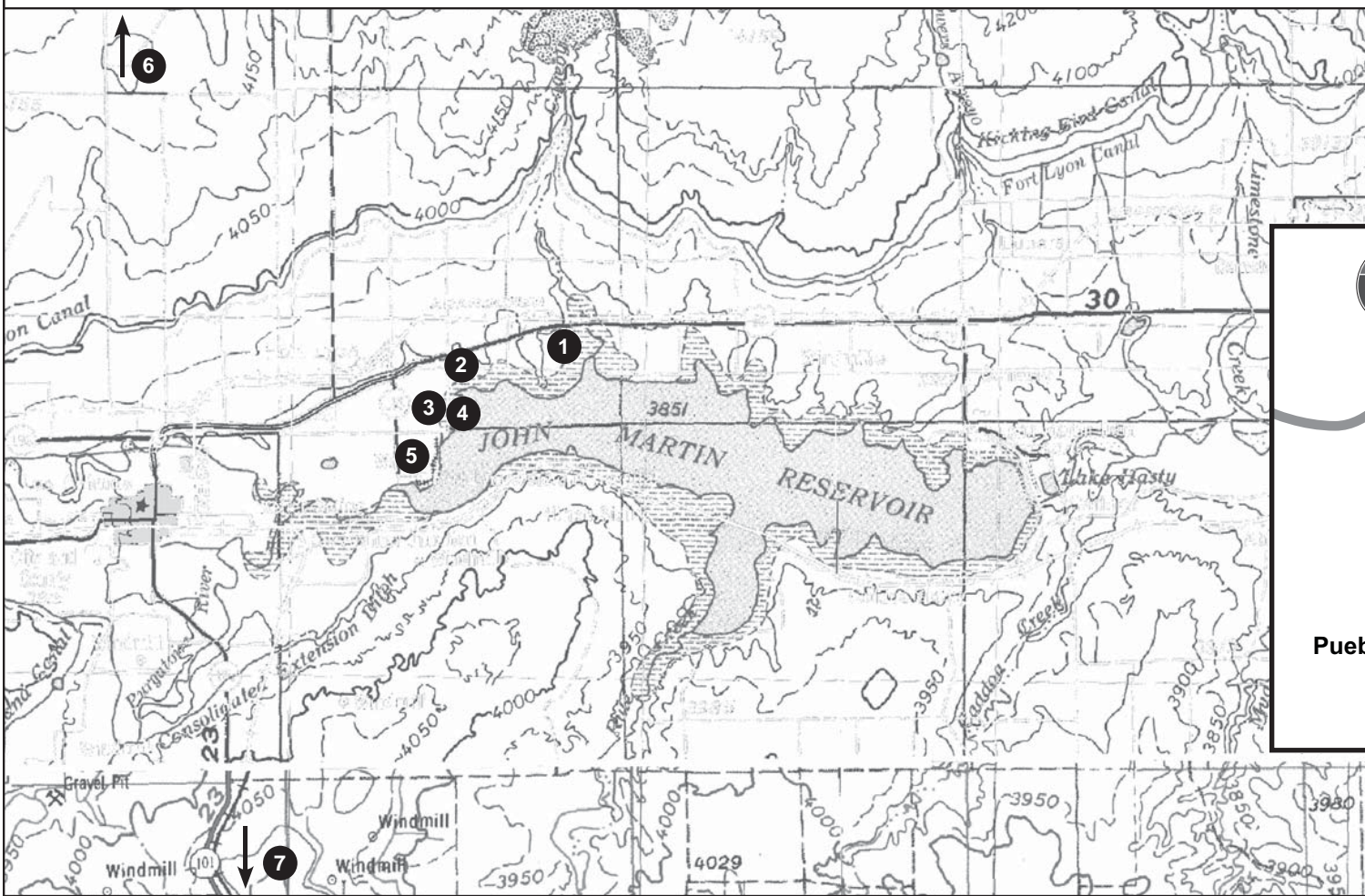
6. **Adobe Creek Reservoir/Blue Lakes** – located 13 miles north of Las Animas on Bent County Road 10. There is a stock pond on Road 10 8.1 miles north of State Highway 194 that, when containing water, can be excellent for longspurs (especially McCown's) in winter, as well as ducks and shorebirds in migration. The short-grass prairie the first few miles north of the Ft. Lyon Canal hosts nesting Long-billed Curlews, while Mountain Plovers can be found, with diligence, along Road 10 between Roads UU and VV. Adobe Creek Reservoir is currently very low due to a current drought, and most of the remaining pool is in Kiowa County, but, when full, the best birding, especially for shorebirds, terns, gulls, waterfowl and herons, is in the Bent County part of the reservoir. When water levels are optimal, birding is often phenomenal.

7. **Setchfield State Wildlife Area** – Many birders do not know that southern Bent County is a land of canyons, cliffs, juniper woodlands and cholla cactus. Setchfield State Wildlife Area contains the only public access into this habitat in Bent County. If solitude is a goal, keep this site in mind; it has been described as the least-visited State Wildlife area in Colorado. While birds are thinly distributed and may take effort to find, the birds are very different from those found in the northern part of the county. Drive south from Las Animas on State Highway 101. Turn west on Road P, and follow it as it winds south and west. Upon entering the canyon country, continue south on Road 10. An obscure property boundary sign at a cattle guard just before a road fork marks the beginning of the State Wildlife area. Veer Right onto Road J just past the large red mailbox. The best birding is near the old broken dam on Muddy Creek, or up to the cliffs and junipers to the west. A great continuation of a vehicular tour of this area continues west on Road J through surprisingly scenic Road Canyon (great for birding from the car) to State Highway 109, where a short trip on a good paved road leads back to La Junta.

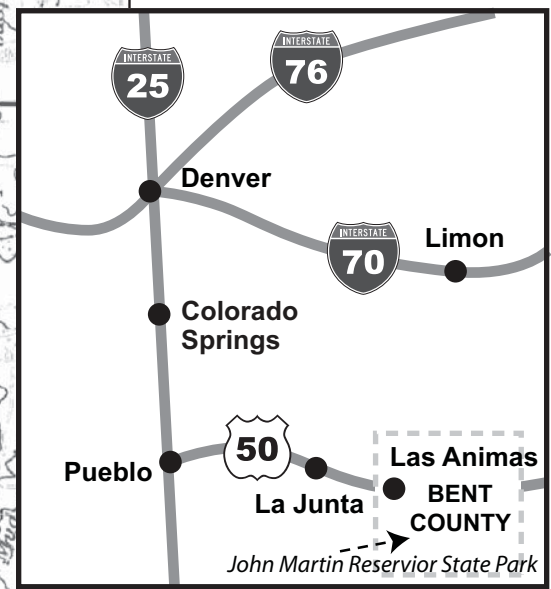
Some Good-Sense Rules for Wildlife Watching Etiquette

1. **Observe animals from a safe distance.** Get close by using binoculars, spotting scope or a camera with a telephoto lens. You probably are too close if animals are looking at you with head up and ears pointed toward you or are "jumpy" when you move or make a noise. If you see these signs, sit quietly or move slowly away until the behavior changes. Be especially sensitive to adults with young.
2. **Move slowly and casually, not directly at wildlife.** Allow animals to keep you in view; do not surprise them.
3. **Never chase or harass wildlife.** Harassment of wildlife is unlawful.
4. **Leave pets at home.** At best they hinder wildlife watching; at worst they can chase, injure or kill wildlife.
5. Using the animals' behavior as a guide, **limit the time you spend watching if animals appear to be stressed.**
6. **Respect others who are viewing** the same animals.
7. **Do no feed wildlife.**
8. **Respect private property;** ask first to watch on private land.
9. Resting is critical behavior for many animals; **don't encourage them to "do something" for your camera.**
10. **Avoid animals that behave strangely or aggressively.** They may be ill.

Birding Areas in Bent County



- 1 Van's Grove
- 2 Wood Thrush Grove
- 3 Fort Lyon State Wildlife Easement
- 4 Fort Lyon Marshes
- 5 Green Heron Slough
- 6 Blue Lake/Adobe Creek
- 7 Setchfield State Wildlife Area



Along the Santa Fe Trail, Bent County offers historic and cultural attractions to enhance your bird watching experience. Come explore Boggsville National Historic Site, last home of Kit Carson; the Kit Carson Museum with exhibits from pioneer history to WWII; and the Old Trail Gallery where local artisans display and sell their art work. For more information about local services and activities visit www.bentcounty.org.

This brochure made possible through the collaborative efforts of the following sponsors:



WATCHABLE WILDLIFE

Bent's Fort Inn



Las Animas
(719) 456-0011
1-800-WESTERN

www.bestwestern.com/bentsfortinn



Hot Eats Cool Treats

At the Hwy 50 stoplight in Las Animas.
Open 10 a.m. - 10 p.m., 7 days a week
(719) 456-2345

SWANS, GEESE, DUCKS

__Greater White-fronted Goose	Mig R
__Snow Goose	Wi A
__Ross' Goose	Wi C
__Canada Goose *	Wi C
__Cackling Goose	Wi R
__Trumpeter Swan	Wi VR
__Tundra Swan	Mig VR
__Wood Duck *	Res U
__Gadwall ^	Mig C Su R Wi R
__American Wigeon	Mig A Wi U
__American Black Duck	SV VR
__Mallard *	Res A
__Blue-winged Teal ^	Mig C Su U
__Cinnamon Teal ^	Mig C Su U
__Northern Shoveler	Mig C Wi U
__Northern Pintail	Mig C Wi U
__Green-winged Teal ^	Mig C Su R Wi U
__Canvasback	Mig U Wi R
__Redhead ^	Mig C Wi R
__Ring-necked Duck	Mig U Wi R
__Greater Scaup	Mig R
__Lesser Scaup	Mig C Wi R
__Surf Scoter	Mig R Wi VR
__White-winged Scoter	Mig R
__Black Scoter	Mig VR Wi VR
__Long-tailed Duck	Wi R
__Bufflehead	Mig C Wi R
__Common Goldeneye	Wi A
__Barrow's Goldeneye	Wi R
__Hooded Merganser	Wi U
__Common Merganser	Wi A
__Red-breasted Merganser	Mig U Wi R
__Ruddy Duck	Mig C

GALLINACEOUS BIRDS

__Ring-necked Pheasant *	Res C
__Lesser Prairie Chicken ^	Res VR
__Wild Turkey *	Res U
__Northern Bobwhite *	Res U
__Scaled Quail *	Res U

LOONS AND GREBES

__Red-throated Loon	Su VR
__Pacific Loon	Fa R
__Common Loon	Mig U Wi VR
__Pied-billed Grebe	Mig U Wi R
__Horned Grebe	Mig C Wi R
__Red-necked Grebe	Mig VR
__Eared Grebe	Mig C Wi R
__Western Grebe	Mig A Wi R
__Clark's Grebe	Mig A Wi R

PELICANS AND CORMORANTS

__American White Pelican	Mig A Wi R
__Brown Pelican	SV X
__Neotropic Cormorant	SV X
__Double-crested Cormorant *	Su C Mig A Wi R

HERONS, BITTERNs AND IBISES

__American Bittern ^	Su U
__Least Bittern ^	Su R
__Great Blue Heron *	Res C
__Great Egret	Mig U
__Snowy Egret	Mig U
__Little Blue Heron	Mig R
__Tricolored Heron	Mig VR
__Reddish Egret	SV X
__Cattle Egret	Mig U, Su R
__Green Heron ^	Su R, Wi X
__Black-crowned Night-Heron	Su U
__Yellow-crowned Night-Heron	SV VR

__White Ibis	SV X
__Glossy Ibis	Mig R
__White-faced Ibis	Mig C

VULTURES, HAWKS, EAGLES AND FALCONS

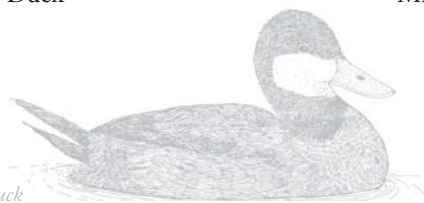
__Turkey Vulture *	Su C
__Black Vulture	SV X
__Osprey	Mig U
__Mississippi Kite *	Su U
__Bald Eagle ^	Wi C
__Northern Harrier ^	Res U
__Sharp-shinned Hawk	Mig U Wi R
__Cooper's Hawk	Mig U Wi R
__Northern Goshawk	Wi VR
__Red-shouldered Hawk	Wi VR
__Broad-winged Hawk	Mig R
__Swainson's Hawk *	Su C
__Red-tailed Hawk *	Res C
__Ferruginous Hawk *	Res U
__Rough-legged Hawk	Wi U
__Golden Eagle *	Wi U Res R
__American Kestrel *	Res C
__Merlin	Wi R
__Peregrine Falcon	Mig U
__Prairie Falcon ^	Res U

RAILS AND CRANES

__Black Rail *	Su U
__King Rail	Su X
__Virginia Rail *	Res U
__Sora *	Res U Wi R
__Common Moorhen	Su X
__American Coot *	Res C
__Sandhill Crane	Mig C

SHOREBIRDS, GULLS, TERNS

__Black-bellied Plover	Mig U
__American Golden-Plover	Fa R
__Snowy Plover *	Su U
__Semipalmated Plover	Mig U
__Piping Plover (Endangered)*	Su U
__Killdeer *	Res C Wi R
__Mountain Plover *	Su U
__Black-necked Stilt *	Su U
__American Avocet *	Su U Mig C
__Greater Yellowlegs	Mig C Wi VR
__Lesser Yellowlegs	Mig C
__Solitary Sandpiper	Mig U
__Willet	Mig U
__Spotted Sandpiper *	Su C
__Upland Sandpiper	Mig R
__Whimbrel	Sp R Su X
__Long-billed Curlew *	Su U Mig U
__Hudsonian Godwit	Sp VR
__Marbled Godwit	Mig U
__Ruddy Turnstone	Mig VR
__Red Knot	Mig VR
__Sanderling	Mig C
__Semipalmated Sandpiper	Mig C
__Western Sandpiper	Mig C
__Least Sandpiper	Mig C Wi VR
__White-rumped Sandpiper	Sp U
__Baird's Sandpiper	Mig C
__Pectoral Sandpiper	Sp R Fa U
__Sharp-tailed Sandpiper	Fa X
__Dunlin	Mig R
__Stilt Sandpiper	Mig U
__Buff-breasted Sandpiper	Mig VR
__Short-billed Dowitcher	Sp VR Fa R
__Long-billed Dowitcher	Mig C
__Wilson's Snipe ^	Res U
__Wilson's Phalarope	Mig C
__Red-necked Phalarope	Mig R



Ruddy Duck

__Red Phalarope	Mig VR
__Parasitic Jaeger	Fa VR
__Long-tailed Jaeger	Fa VR
__Laughing Gull	SV VR
__Franklin's Gull	Mig C
__Bonaparte's Gull	Sp R Fa U Wi VR Su X
__Mew Gull	Fa VR
__Ring-billed Gull	SV Res C
__California Gull *	Res U
__Herring Gull	Wi C Su VR
__Thayer's Gull	Wi R
__Iceland Gull	Wi X
__Lesser Black-backed Gull	SV VR Res R
__Glaucous Gull	Wi R
__Glaucous-winged Gull	Wi X
__Great Black-backed Gull	Wi R
__Sabine's Gull	Fa R
__Black-legged Kittiwake	Fa VR
__Caspian Tern	SV R
__Common Tern	SV R
__Arctic Tern	Mig VR
__Forster's Tern	Mig C
__Least Tern (endangered)*	Su U
__Black Tern	Mig C

DOVES

__Rock Pigeon *	Res C
__Eurasian Collared-Dove *	Res U
__White-winged Dove	SV VR
__Mourning Dove *	Res A Wi R
__Inca Dove	Fa Mig VR

CUCKOOS AND ROADRUNNER

__Black-billed Cuckoo	Su R
__Yellow-billed Cuckoo ^	Su U
__Greater Roadrunner ^	Res U

OWLS

__Barn Owl *	Res U Wi I
__Western Screech-Owl *	Res U
__Eastern Screech-Owl ^	Res R
__Great Horned Owl *	Res C
__Snowy Owl	Wi I VR
__Burrowing Owl *	Su C
__Long-eared Owl	Mig Wi R
__Short-eared Owl	Wi R
__Northern Saw-whet Owl	Wi R

GOATSUCKERS

__Lesser Nighthawk	Mig VR
__Common Nighthawk *	Su C
__Common Poorwill *	Su U

SWIFTS

__Chimney Swift *	Su C
-------------------	------

HUMMINGBIRDS

__Black-chinned Hummingbird ^	Su U
__Calliope Hummingbird	Fa VR
__Broad-tailed Hummingbird	Sp Fa R
__Rufous Hummingbird	Fa R

KINGFISHERS

__Belted Kingfisher ^	Res U
-----------------------	-------

WOODPECKERS

__Lewis's Woodpecker *	Res R
__Red-headed Woodpecker *	Su U
__Red-bellied Woodpecker	Wi R
__Yellow-bellied Sapsucker	Mig R
__Red-naped Sapsucker	Mig R
__Ladder-backed Woodpecker ^	Res R
__Downy Woodpecker *	Res C
__Hairy Woodpecker ^	Res U
__Northern Flicker *	Res C

FLYCATCHERS

__Olive-sided Flycatcher	Mig U
__Western Wood-Pewee	Mig C
__Eastern Wood-Pewee	Mig R
__Willow Flycatcher	Mig U
__Least Flycatcher	Mig U
__Hammond's Flycatcher	Mig R
__Gray Flycatcher	Mig R
__Dusky Flycatcher	Mig R
__Cordilleran Flycatcher	Mig R
__Eastern Phoebe *	Mig R Su R
__Say's Phoebe *	Mig U Su R
__Vermilion Flycatcher *	Mig VR Su VR
__Ash-throated Flycatcher ^	Su U
__Great Crested Flycatcher *	Su U
__Cassin's Kingbird *	Su U
__Western Kingbird *	Su A
__Eastern Kingbird *	Su C
__Scissor-tailed Flycatcher	Mig R
__Sulphur-bellied Flycatcher	Fa X

SHRIKES AND VIREOS

__Loggerhead Shrike *	Res U
__Northern Shrike	Wi U
__White-eyed Vireo	Sp Mig R
__Bell's Vireo	Mig VR
__Yellow-throated Vireo	Mig VR
__Plumbeous Vireo	Mig U
__Cassin's Vireo	Mig R
__Blue-headed Vireo	Fa R
__Warbling Vireo ^	Su U
__Philadelphia Vireo	Mig VR
__Red-eyed Vireo ^	Mig U

CORVIDS

__Steller's Jay	Fa Wi I VR
__Blue Jay *	Res C
__Western Scrub-Jay ^	Fa Wi I U Res U

__Pinyon Jay	Fa I
__Clark's Nutcracker	Fa I X
__Black-billed Magpie *	Res C
__American Crow *	Res U
__Chihuahuan Raven *	Res U
__Common Raven *	Res R

LARKS

__Horned Lark *	Res A
-----------------	-------

SWALLOWS

__Tree Swallow	Mig U
__Violet-green Swallow	Mig R
__Northern Rough-winged Swallow *	Su U
__Bank Swallow	Mig U
__Cliff Swallow *	Su A
__Cave Swallow (under review by CBRC)	Fa X
__Barn Swallow *	Su C

CHICKADEES, TITMICE AND BUSHTITS

__Black-capped Chickadee *	Res R
__Mountain Chickadee	Wi I R
__Juniper Titmouse	Res VR
__Bushtit ^	Fa Wi I U

NUTHATCHES AND CREEPERS

__Red-breasted Nuthatch	SV Fa I U
__White-breasted Nuthatch	W I U
__Brown Creeper	Wi U

WRENS

__Rock Wren *	Res C Wi R
__Canyon Wren ^	Res R
__Carolina Wren	Su VR
__Bewick's Wren *	Res U
__House Wren *	Su C
__Winter Wren	Wi R

__Sedge Wren Fa X
 __Marsh Wren Wi C

KINGLETS, GNATCATCHERS

__Golden-crowned Kinglet Mig U
 __Ruby-crowned Kinglet Mig C Wi R
 __Blue-gray Gnatcatcher Mig U Wi X

THRUSHES AND THRASHERS

__Eastern Bluebird * Res R
 __Mountain Bluebird Mig U Wi C
 __Townsend's Solitaire Mig U Wi R
 __Veery Mig R
 __Gray-cheeked Thrush Sp R
 __Swainson's Thrush Sp C Fa R
 __Hermit Thrush Sp C Fa R Wi VR
 __Wood Thrush Mig VR
 __American Robin * Res C
 __Varied Thrush Fa VR
 __Gray Catbird Mig U Wi VR
 __Northern Mockingbird * Su C Wi VR
 __Sage Thrasher Mig U Wi I
 __Brown Thrasher * Su C Wi VR
 __Curve-billed Thrasher * Res U

STARLINGS, PIPITS AND WAXWINGS

__European Starling * Res A
 __American Pipit Mig C Wi R
 __Sprague's Pipit Fa VR
 __Cedar Waxwing Mig Wi I

WARBLERS

__Blue-winged Warbler Mig R
 __Golden-winged Warbler Mig R
 __Tennessee Warbler Mig R
 __Orange-crowned Warbler Mig U
 __Nashville Warbler Mig R
 __Virginia's Warbler Mig R

__Northern Parula Mig R
 __Yellow Warbler ^ Mig C Su U
 __Chestnut-sided Warbler Mig R
 __Magnolia Warbler Mig R
 __Yellow-throated Warbler Mig VR
 __Black-throated Blue Warbler Mig VR
 __Yellow-rumped Warbler Mig C Wi R
 __Black-throated Gray Warbler Mig R
 __Black-throated Green Warbler Mig R
 __Townsend's Warbler Mig U
 __Hermit Warbler Mig VR
 __Blackburnian Warbler Mig VR
 __Pine Warbler Fa VR
 __Prairie Warbler Mig VR
 __Palm Warbler Mig R
 __Bay-breasted Warbler Mig VR
 __Blackpoll Warbler Mig R
 __Black-and-white Warbler Mig U
 __American Redstart Mig U
 __Prothonotary Warbler Mig R
 __Worm-eating Warbler Mig R
 __Ovenbird Mig U
 __Northern Waterthrush Mig U
 __Kentucky Warbler Mig VR
 __Connecticut Warbler Mig X
 __Mourning Warbler Mig R
 __MacGillivray's Warbler Mig U
 __Common Yellowthroat * Su C Wi VR
 __Hooded Warbler Mig R
 __Wilson's Warbler Sp U Fa C
 __Painted Redstart Fa X
 __Yellow-breasted Chat ^ Su U

TANAGERS

__Summer Tanager Mig R
 __Scarlet Tanager Mig VR
 __Western Tanager Mig U

TOWHEES, SPARROWS, LONGSPURS AND BUNTINGS

__Green-tailed Towhee Mig U
 __Spotted Towhee Mig C Wi R
 __Eastern Towhee Wi X
 __Canyon Towhee * Fa Wi I Res U
 __Cassin's Sparrow * Su C
 __Rufous-crowned Sparrow * Res R
 __American Tree Sparrow Wi C
 __Chipping Sparrow Mig A
 __Clay-colored Sparrow Mig C
 __Brewer's Sparrow Mig C
 __Field Sparrow Mig R
 __Vesper Sparrow Mig A Wi X
 __Lark Sparrow * Su C
 __Sage Sparrow Sp VR
 __Black-throated Sparrow Sp VR
 __Lark Bunting * Su A
 __Savannah Sparrow Mig C Wi R
 __Grasshopper Sparrow ^ Su U
 __Baird's Sparrow Sp VR
 __LeConte's Sparrow Wi R
 __Fox Sparrow Wi VR
 __Song Sparrow Mig U Wi C
 __Lincoln's Sparrow Mig C Wi R
 __Swamp Sparrow Wi U
 __White-throated Sparrow Mig U Wi R
 __Harris's Sparrow Mig U Wi R
 __White-crowned Sparrow Mig A Wi C
 __Dark-eyed Junco Wi C
 __McCown's Longspur Mig U Wi R
 __Lapland Longspur Wi I U
 __Chestnut-collared Longspur Mig U Wi VR
 __Northern Cardinal ^ Res R
 __Rose-breasted Grosbeak Sp U
 __Black-headed Grosbeak Mig U
 __Blue Grosbeak * Su C
 __Lazuli Bunting * Mig U Su R
 __Indigo Bunting * Mig R Su R

__Painted Bunting Mig VR
 __Dickcissel * Su I C

BLACKBIRDS AND ORIOLES

__Red-winged Blackbird * Res A
 __Western Meadowlark * Res A
 __Yellow-headed Blackbird Mig U Wi R
 __Brewer's Blackbird * Res U
 __Common Grackle * Su C Wi R
 __Great-tailed Grackle * Res U
 __Brown-headed Cowbird * Mig U Wi R
 __Orchard Oriole * Su U
 __Baltimore Oriole Su R
 __Bullock's Oriole * Su C
 __Scott's Oriole Su VR

FINCHES

__Purple Finch Wi R
 __Cassin's Finch Wi I R
 __House Finch * Res C
 __Red Crossbill Fa VR
 __White-winged Crossbill Wi X
 __Pine Siskin Wi I C
 __Lesser Goldfinch ^ Su R
 __American Goldfinch Res C
 __Evening Grosbeak Fa I VR

WEAVER FINCHES

__House Sparrow * Res A
 __Greater Roadrunner ^ Res U



Belted Kingfisher