



bonny lake state park

FY 07-08 PARK FACTS

about the park

Bonny Lake State Park is located 23 miles north of Burlington, adjacent to Highway 385 and approximately 12 miles west of the Colorado-Kansas border. Designated an "Important Bird Area" by the Audubon Society, this park is home to a wide variety of wildlife. Bobcats, owls, turkeys, white pelicans, waterfowl and shorebirds top a long list of wildlife that can be seen around the reservoir and the riparian habitat along the South Republican River. Only three hours from most Front Range cities, this peaceful park offers unlimited recreational opportunities, with excellent fishing, boating, water sports and hunting. Come catch a firefly and let Bonny Lake surprise you!

total visitation, FY 07-08

(July 1, 2007 to June 30, 2008)

28,593

county

Yuma

congressional district

4

state legislative districts

Senate 1

House 63

year became a state park

1966

ownership

0% State Parks

100% other

land acres

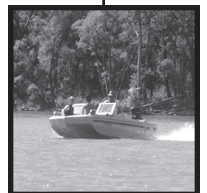
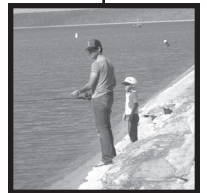
4,793 acres

water acres

1,900 acres

elevation

3700'



top attractions

- camping
- water recreation
- fishing
- hunting
- "Important Bird Area" designation
- interpretive displays

park inventory

miles of road

paved 1.9

unpaved 17.0

miles of trails

hiking 0.3

number of boat ramps

6

number of campsites

190

number of cabins/yurts

0

number of picnic sites

98

concessions at the park

Bonny Lake Marina

major buildings/structures

park headquarters/visitor center

camper services building

shower and restroom building

contact information

Bonny Lake State Park • Park Manager: Howard Paul • 30010 Road 3 • Idalia, CO • 80735 • 970-354-7306 • bonny.lake.park@state.co.us • www.parks.state.co.us •

challenges

- Bonny Lake has been suffering from dropping water levels for the last eight years, averaging about a two and a half foot drop each year. Currently the lake is the lowest it has been since the initial filling in 1951. This decrease in water level has affected boating, swimming and the overall recreation experience of the visitor.
- In FY 07-08 the park staff continues to work the Yuma County Pest Control District and Colorado State University to control and remove tamarisk from the park.
- Continuing to provide water for recreation and wildlife.



land acquisitions FY 07-08

none

partners

- local chapter of the Future Farmers of America
- Bureau of Reclamation
- Good Sam Club ("Flatlanders" from Burlington)

volunteer activity

To recruit volunteers, Bonny Lake State Park continues to advertise volunteer opportunities on local radio stations and within weekly articles in the local newspapers. The Idalia Future Farmers of America planted 14 trees and donated over 150 hours of volunteer labor. The Good Sam "Flatlanders" provided over 200 hours of tree care and ground-keeping labor.

vision statement for Colorado State Parks

Colorado State Parks offer exceptional settings for renewal of the human spirit. Residents and visitors enjoy healthy, fun-filled interaction with the natural world, creating rich traditions with family and friends that promote stewardship of our natural resources. Park employees and their partners work together to provide ongoing and outstanding customer service through recreational programs, amenities and services.

budget and operations

number of full-time employees

5.0

number of temporary employees*

8.5

**temporary employees are hired for periods up to six months in length*

number of volunteers*

64

total volunteer hours contributed*

917

**volunteer and volunteer hours figures are from calendar year 2007*

total operating expenses

\$491,083

capital construction expenses

\$24,823

total revenue generated

\$83,050

ratios

full-time staff to annual visitors

1:5,719

